

Glenbeigh

ACMC Healthcare System

An affiliate of



Community Benefit 2019



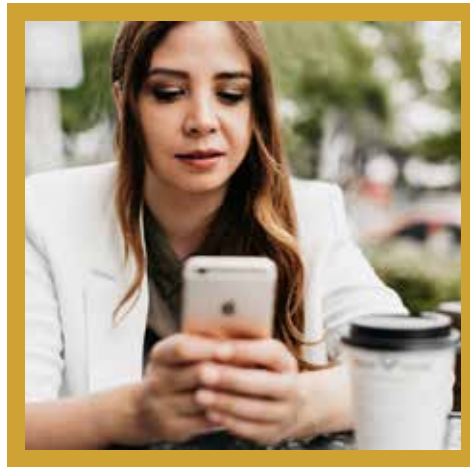


TABLE OF CONTENTS

3

Letter from the Chief Executive Officer

5

Overview of Community Needs

8

Defined Service Community

11

Service Report

15

Community Benefit Report

27

Social Connections

29

Glenbeigh Foundation Report

Glenbeigh

ACMC Healthcare System

An affiliate of



Letter from the Chief Executive Officer

Dear Friends,

During this past year, 2019, Glenbeigh has addressed several vital community needs as part of our community benefit initiative. As a top provider of alcohol and drug treatment, Glenbeigh embraces the pillars of excellence while remaining dedicated to helping individuals, families and communities touched by substance use disorders. People impacted by addiction continue to be an underserved population. Limited insurance coverage, financial hardships or a lack of transportation remain among the top reasons cited as roadblocks to treatment when assessing community health. Glenbeigh believes everyone should have a voice and be provided access to affordable treatment services. As a result, Glenbeigh works with individuals, families, referents and licensing boards to identify needs and determine the best course of action to secure the most appropriate level of care.

Another area of need identified in the 2016 Community Health Needs Assessment, and addressed during 2019, is education. Through interviews, focus groups and surveys, community members cited ongoing misinformation about addiction, treatment and recovery. In conjunction with the need for public education, the CHNA identified a need for strategic professional education as well. Glenbeigh concentrated on these needs by offering extensive education on various substance use topics. Symposiums and meetings were provided where the public could learn about processes that impact the addict as well as families and communities. Learning how to support an individual in treatment, and in recovery, is an important component of a successful long-term plan.

Teaching healthcare professionals to identify patients who may need treatment and to work with people in recovery remained a top priority during 2019. Preparing future healthcare workers to treat people with the disease of addiction and teaching counselors and social workers how to build effective individualized treatment plans and involve family members in the recovery process remains important and leads to healthier people and a healthier community. Glenbeigh partnered with other agencies, organizations and businesses to address the health needs of vulnerable persons impacted by substance use and to improve community health.

This community benefit report details Glenbeigh's 2019 community benefit initiatives. All activities remain connected to Glenbeigh's mission to serve adults with alcohol and drug addictions. Because of Glenbeigh's unique connection to multiple communities, we remain committed to going beyond the defined service area and serving communities where we have a presence. For detailed information on Glenbeigh's community benefit initiatives, the 2016 Community Health Needs Assessment and Implementation Strategy are available at www.glenbeigh.com/community-benefit.

It is my pleasure to share the following accomplishments with you.


Sincerely,

A handwritten signature in black ink that reads "Gary Seech".


Gary Seech,
Acting Chief Executive Officer




SERVING THE COMMUNITY



There is more to community benefit than statistics. Behind the numbers are stories of resiliency, hope and achieving a new way of life. Stories and statements within this publication have been edited and have had identifying details removed or changed to protect the privacy of the individual or family.




This report is published by Glenbeigh. While every effort is made to present accurate information, errors do occur. Community benefit activities are reported on the annual 990, Schedule H, which presents the most accurate accounting of Glenbeigh's efforts. Glenbeigh's community benefit activities are enumerated based on the guidelines of The Catholic Health Association of the United States and meet Affordable Care Act requirements.




For more information about Glenbeigh's Community Benefit activities, or this report, please contact Glenbeigh Development at 440-710-3244. Printed copies of this report may be requested by contacting the Glenbeigh Development Office.



MISSION:



Glenbeigh's mission is to provide the highest quality healthcare to those in need of alcohol and drug addiction treatment and support ongoing recovery efforts.



OVERVIEW OF COMMUNITY NEEDS

COMMUNITY BENEFIT

Community benefit describes the efforts non-profit hospitals and healthcare systems take to give back to the community in a meaningful way that improves the health of vulnerable populations. This may include individuals who do not have access to care because they are uninsured, underinsured or underserved. As part of the Affordable Care Act, the IRS requires healthcare providers to ensure that vulnerable populations are not excluded from receiving adequate health care. Community benefit includes unreimbursed goods, services and resources that are provided within a defined area and address the needs as defined in the tri-annual Community Health Needs Assessment and Implementation Strategy. Examples of community benefit activities may include charitable care or other forms of financial assistance and the delivery of free or low-cost care to qualifying individuals. It may also include sponsoring events that promote healthy living or providing education directly to the public or for professionals working in a strategic field. Community benefit can range from cultivating a community garden to subsidizing the distribution of overdose reversal kits to providing transportation. Community benefit is about improving the overall health and access to care by working in collaboration with other entities to create a cohesive plan within a defined service community.

COMMUNITY HEALTH NEEDS ASSESSMENT

Glenbeigh conducts a Community Health Needs Assessment every three years using data and community input to build a plan for community benefit activities. 2019 activities were conducted based on the findings of the 2016 CHNA along with the corresponding Implementation Strategy. Alcohol and drug trends can change rapidly, therefore Glenbeigh periodically assesses community benefit activities to ensure initiatives are in-line with community health needs. The CHNA defines Glenbeigh's service community and the health needs within the community. It takes into account statistical data as well as input from community members and assorted public or private stakeholders. Glenbeigh's 2016 CHNA was reviewed by the board and adopted along with the Implementation Strategy. Both documents are available online at www.glenbeigh.com/community-benefit or by request by contacting Glenbeigh Development. The CHNA and the Implementation Strategy are widely available, at no cost, to the public.

SOCIAL DETERMINANTS OF HEALTH

Community benefit activities take into consideration social determinants of health within the defined service community. Data collected during the CHNA process show that health risks and outcomes, as well as quality of life, are often interdependent with conditions within a community. Social determinants of health include where people are born; where they live, work or attend school; and the cohesiveness of the community: religion, race and age to name a few.

These factors often impact the availability of safe housing, transportation, quality education, living-wage jobs and access to quality food. Corresponding factors include discrimination, racism, violence and substance abuse. Consequently, social determinants of health contribute to a wide range of health disparities. During the three-year period covered by a CHNA, a defined service community can change. Between 2016 and 2019, Glenbeigh's service community shifted eastward to include more Appalachian regions. These areas experience significant poverty with corresponding lack of education, employment and housing. During the same time frame, significant population declines occurred throughout northern Ohio and sections of Pennsylvania.

Within Glenbeigh's service communities, there are many areas where poverty remains prevalent and chemical dependency is widespread. In 2019, Glenbeigh provided financial assistance to individuals seeking treatment who met clinical and financial eligibility.

Through the financial assistance policy, Glenbeigh provided treatment services to underinsured or uninsured individuals contributing **\$5,518,331 million in charitable care** to benefit the community. This charitable care total includes \$2,714,931 million in scholarships and patient support and \$2,803,400 in other forms of provisions.

In addition to direct charitable care, many individuals suffering with the disease of addiction are in need of transportation and low-cost interim housing options. As a result, Glenbeigh provides transportation within a defined territory so individuals can secure treatment services. **During 2019, Glenbeigh logged 2,988 transports.**

Glenbeigh's Niles Recovery Community offers low-cost housing options for people who have completed inpatient treatment yet need the structure of living with peers in a sober community. The purpose of recovery housing is to provide individuals with a safe environment, free from alcohol and other drugs, while building a foundation in recovery. The benefits of living in the Glenbeigh recovery community include access to a structured support network founded in abstinence-based programming, on-site staff that provides oversight and continued care along with an opportunity to learn from others the skills needed to better reintegrate into society.

KEY FACTORS

Research used for the CHNA to define the core health needs within Glenbeigh's identified service communities included secondary data, key informant surveys, interviews and focus groups. Consideration was made to ensure each component included the unique perspective of alumni, family members, healthcare providers, employers and others who work with, or assist, individuals and families impacted by addiction.

The following key findings were identified as significant health needs within Glenbeigh's principle service communities in the 2016 Community Health Needs Assessment:

- Drug and alcohol addiction are pervasive and impacts people of all races, income levels and ages.
- There are limited resources for the treatment of drug and alcohol addiction, particularly for the uninsured.
- There are limited inpatient treatment options for the treatment of drug and alcohol abuse as well as limited detox beds.
- Transitional services, such as residential housing options and vocational rehabilitation, are in great need.
- There is a clear connection between drug and alcohol abuse and social determinants of health.

- Indicators point to increasing rates of heroin addiction due to the ease of accessibility and relative low cost compared to other drugs.
- The age of the addict is on the decline.
- Among providers and other professionals, more education is needed about what services are available and how to fully understand the treatment of addiction.

DEFINED SERVICE AREA

Glenbeigh's 2019 service community included eleven counties in Northeast Ohio and two counties in Western Pennsylvania. These counties accounted for approximately 71 percent of inpatient and outpatient volumes in 2016 when the CHNA was completed.

A complete description of the communities and the criteria used for inclusion is available in the CHNA, which is available online at www.glenbeigh.com/community-benefit or by request by calling Glenbeigh at 1-800-234-1001.

DEFINED SERVICE COMMUNITY



OHIO SERVICE COMMUNITY

Glenbeigh's service area is defined in the 2016 Community Health Needs Assessment as eleven counties in northern Ohio and two counties in western Pennsylvania.



PENNSYLVANIA SERVICE COMMUNITY

Approximately 20 percent of Glenbeigh's admissions are from the state of Pennsylvania. Five of Glenbeigh's service area counties are within the Appalachian Region.



NATIONAL SERVICE COMMUNITY

As a nationally recognized treatment facility, Glenbeigh treats individuals from across the United States. Glenbeigh is committed to treating addiction and enhancing recovery.

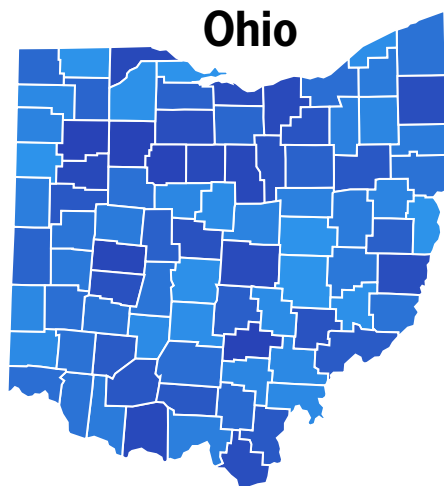


BEYOND THE DEFINED COMMUNITY

Community benefit programming is designed to promote education and workforce development, strengthen families and foster safe communities. Glenbeigh helps communities in need outside the defined service area.

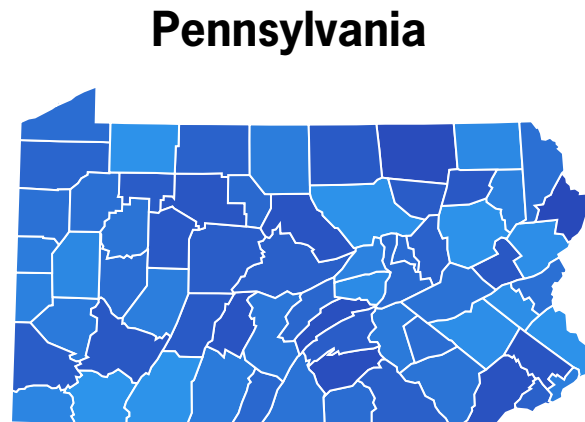


OHIO AND PENNSYLVANIA SERVICE COMMUNITIES



Ohio's Top Service Counties:

County	Admissions
Cuyahoga	451
Ashtabula	231
Trumbull	186
Lake	139
Summit	129



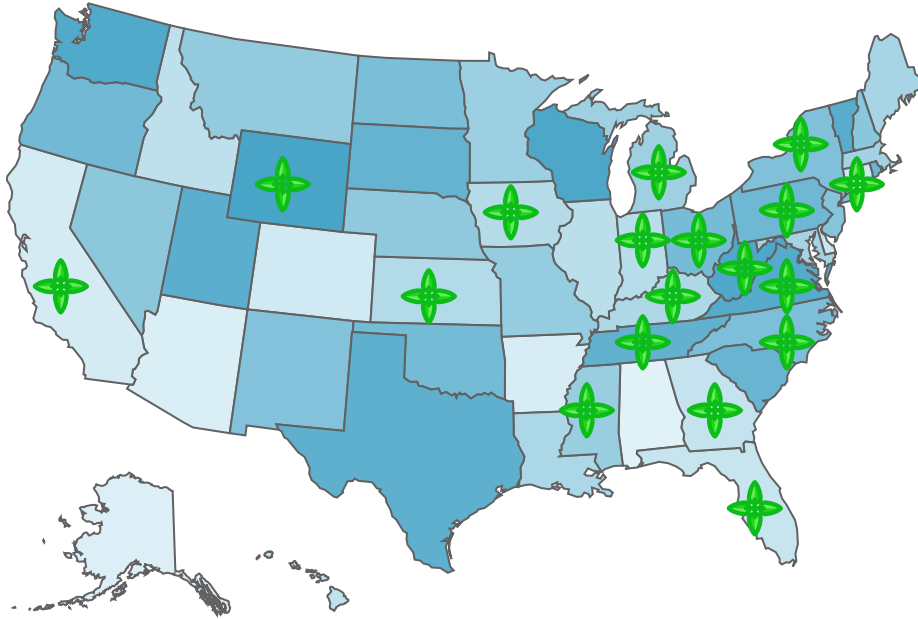
Pennsylvania's Top Service Counties:

County	Admissions
Erie	330
Beaver	187
Allegheny	181
Washington	160
Westmoreland	108

The majority of people seeking treatment at Glenbeigh during 2019 were from Ohio and Pennsylvania. Glenbeigh is committed to providing patients from any region with quality, affordable addiction treatment services. Glenbeigh is a community partner working with referents, social service agencies, other treatment providers, county entities, schools and churches to secure appropriate care for people of all income levels. Glenbeigh treated patients from 59 of Ohio's 88 counties and from 20 of Pennsylvania's 67 counties.

During 2019, patient admissions began to transition eastward increasing the number of Pennsylvania counties served.

NATIONAL SERVICE COMMUNITY



**Glenbeigh admitted patients from
18 different states.**

The top five states are:

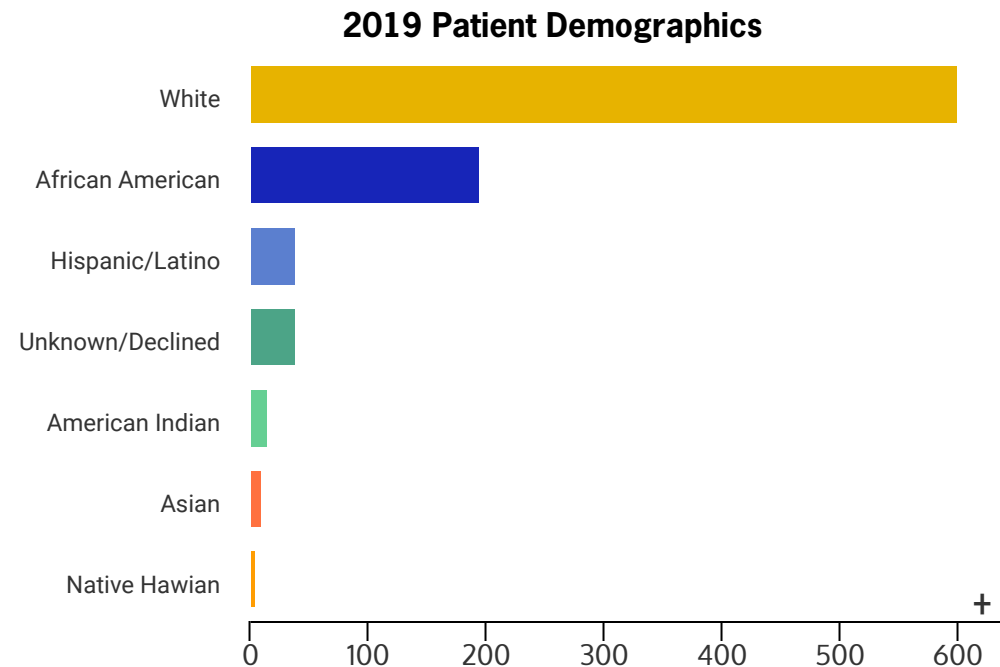
- Ohio
- Pennsylvania
- Michigan
- New York
- West Virginia

SERVICE REPORT

Glenbeigh delivers world-class patient care, specializing in the treatment of substance use disorders. Our belief is that every person touched by addiction should be treated with dignity and respect. We understand the barriers and stigma faced by people addicted to alcohol and other drugs. Glenbeigh welcomes people with diverse backgrounds and life experiences. We accept differences, show respect for all, refrain from judging and work to empower our patients and their families to achieve and sustain long-term recovery.

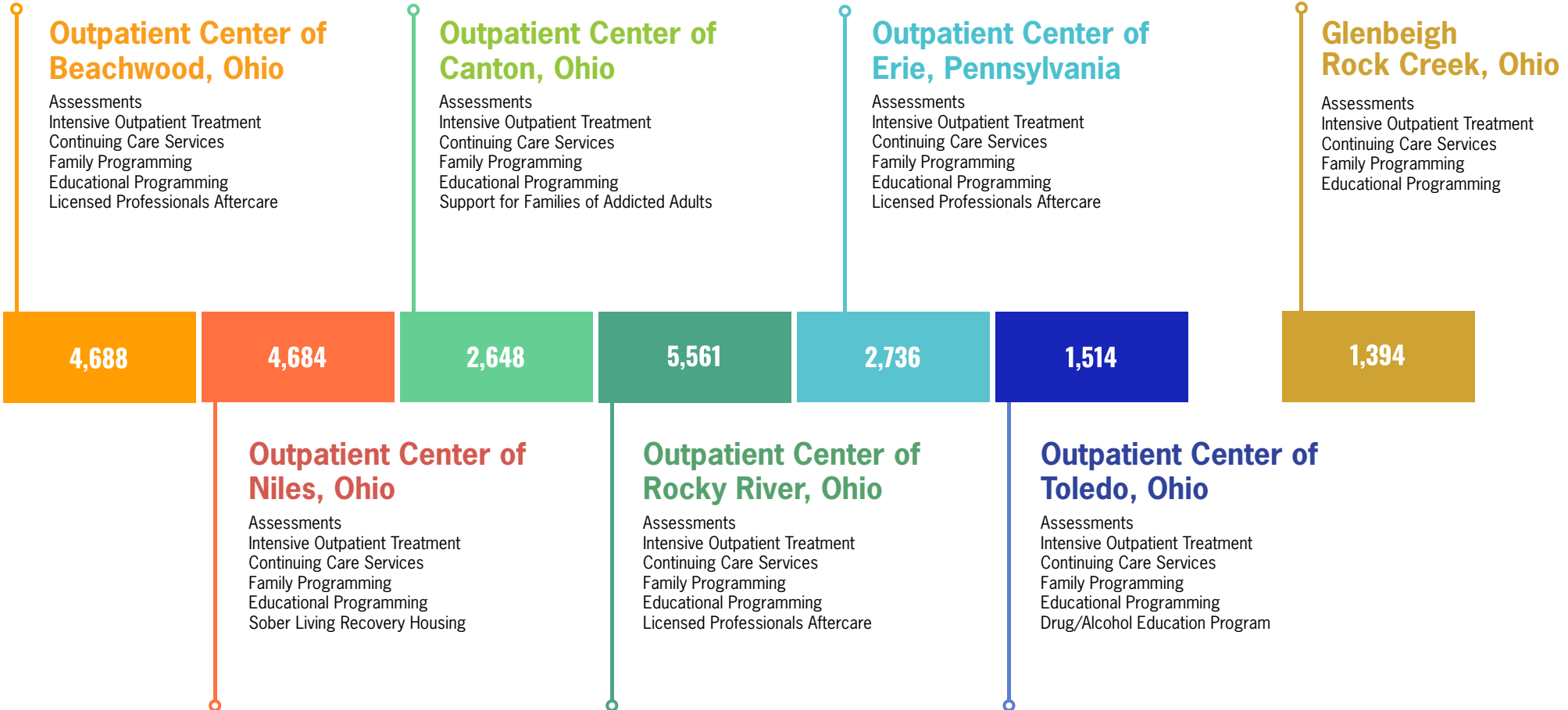
Glenbeigh accepts patients without regard to race, color, gender, gender identity and/or expression, sexual orientation, religion, national origin, genetics, lifestyle, age, disability, veteran status or any other federal, state or local protected class. Our culture is one of commitment to creating an environment of recovery where our patients can connect, belong and learn.

What makes Glenbeigh excel is our highly skilled and compassionate staff who provide premier treatment and continued recovery support. Our team members work with each patient to create practical and achievable recovery goals. After treatment is complete, Glenbeigh continues to provide a variety of support services open to the recovery community, family and friends.



Source: Glenbeigh DRG Data 2019

GLENBEIGH OUTPATIENT SERVICES



A total of 23,225 Intensive Outpatient Sessions were completed during 2019.



SERVICE REPORT

The following charts provide a snapshot of Glenbeigh’s charitable contributions and community involvement between January 1 and December 31, 2019.

During that time period, Glenbeigh’s gross community investment, excluding charitable care, was \$449,482. Total reportable community benefit equaled \$445,225.

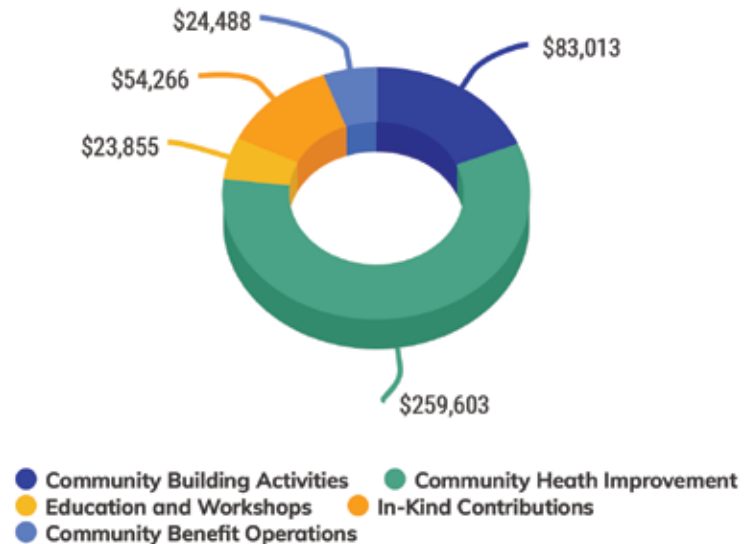
Overall, 83,653 services were provided to individuals through Glenbeigh’s community benefit programs.

Community Benefit: Number of People Served



	Community Building Activities	65,491
	Community Health Improvement	12,004
	Financial and In-Kind Donations	5,496
	Education and Workshops	662

Community Benefit: Reportable Community Benefit Expenses



	Community Building Activities		Community Health Improvement
	Education and Workshops		In-Kind Contributions
	Community Benefit Operations		

“ Before Glenbeigh, I was using fentanyl and cocaine while drinking whatever I could find. On the side, I managed to work odd jobs. I chose to stick to myself and home was under a bridge.

This wasn't the life I dreamed of. Before, I was in college. I don't know how my life derailed, but it did. The drugs quickly took over and pursuing the next high consumed my thoughts. The first casualties of my addiction were my girlfriend of 7 years and my daughter. Shortly afterwards, my schooling, my livelihood and my self-worth were all lost.

One day I ended up standing outside my daughter's school. Seeing other parents picking up their kids was my wake-up call. That's the day when I decided I needed to get off the roller coaster.

I called Glenbeigh and was in treatment a day later. It hasn't been easy but my life is improving. The difference for me was working with counselors who didn't judge. They gave me hope. Thank you for being there for me when I needed help. I don't feel abandoned any longer. I'm no longer alone and am stronger with my support network and my Glenbeigh family. ”



COMMUNITY BENEFIT ACTION ITEMS

Glenbeigh is committed to working collaboratively with private and public entities to assess and address the strategic health needs within our community. In fiscal year 2019, Glenbeigh addressed the following health priorities identified through the CHNA.

Access to Quality Healthcare

Glenbeigh provides financial assistance and other discounts to people seeking treatment based upon a combination of factors. Glenbeigh collaborates with other agencies and organizations to provide appropriate levels of care for people seeking treatment. The hospital provides detoxification services to counties without resources to ensure all demographics have access to quality treatment services for alcohol and drug addiction.

Housing Quality and Affordability

Glenbeigh provides affordable sober living housing for individuals who have completed treatment. By providing sober living options, Glenbeigh promotes healthy behaviors and a lifestyle conducive to sustaining long-term recovery. Glenbeigh has an established referral network for post-treatment housing that promotes recovery community living in various areas.

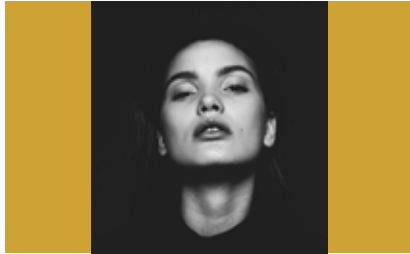
Access to Transportation

A large portion of Glenbeigh's defined service area falls within the Appalachian Region where there is limited access to both public transportation and reliable private transportation. Glenbeigh provides transportation to qualifying individuals in need as a means of eliminating barriers to treatment.

Quality Education and Economic Vitality

Clinical education for a diverse range of students and working professionals is an important component of workforce development. Glenbeigh offers educational seminars on evidence-based practices for the treatment of drug and alcohol addiction. Topics cover addiction, treatment and recovery. Glenbeigh also educates the public on how to identify a possible drug overdose and the proper use of Naloxone to reverse the effects of opioids. Free education is provided as part of our community benefit initiatives.

COMMUNITY BENEFIT



**COMMUNITY
BUILDING
ACTIVITIES**



**EDUCATION
AND
WORKSHOPS**



**COMMUNITY
HEALTH
IMPROVEMENT**



**CHARITABLE
CARE**

Addressing alcohol and drug addiction in a meaningful way within the community requires a willingness to engage in open dialogue about the issues and collaborate with supporting agencies and organizations. Alcohol and drug addiction pose complex challenges effecting considerable cost to individuals, families and society. Only with a thorough understanding of the issues and challenges faced by anyone impacted by addiction can innovative solutions be formulated.

Glenbeigh's Community Benefit initiatives are reported in four categories: Community Building Activities, Education and Workshops, Community Health Improvement and Charitable Care.



Community Building

Community building activities address the needs of the community beyond addiction treatment services. Glenbeigh sponsors initiatives that serve and promote the recovery community well beyond our defined service borders. These activities include communications, electronic and print; hospital representation in the community; collaboration with other organizations; sober living events and community health improvement advocacy. During 2019, Glenbeigh expended a total of \$87,270 towards these efforts and served a total of 65,491 people.



Education and Workshops

Health professionals education and open workshops represent Glenbeigh's efforts to educate the general public as well as current and future health professionals. 131 nursing students learned from Glenbeigh's exceptional staff during 2019. Glenbeigh invested \$18,690 in the Rise and Shine professional education series and professional workshops. A total of 531 people attended those offerings. Overall, a total of \$23,855 was expended for professional education seminars that served another 662 people.



Community Health Improvement

Community health improvement includes all the activities and programs Glenbeigh implements for the purpose of improving health. Bridges to Recovery events; community drug and alcohol abuse presentations; specialty workshops; family, parenting, sibling programs; bereavement support groups; and school based health education programs. It also includes eliminating barriers to treatment. During 2019, Glenbeigh provided 2,988 transportation services at a cost of \$114,995. Overall, Glenbeigh dedicated \$259,603 to community health improvement initiatives and served 12,004 individuals during 2019.

“ I’m lucky to be alive. My drug use was taking me down a path of self-destruction. I got treatment at different places. But each time I got out, I relapsed, tried again and relapsed again. This was my life because I was only working the program while in treatment. Once out, my ego took over. I didn’t need any support and felt the fellowship tools were a joke. I was sure I knew it all. Each time, I would get a few more months further before relapsing, but each time my relapse was more severe. I stayed clean almost 14 months before my last relapse.

I knew I had to do something different after treatment. Having no home, I was lucky there was an opening at Glenbeigh’s sober living housing. It was the best decision for me. Living with others in recovery helped me see that I didn’t really know everything. Turns out fellowship isn’t as old-fashioned as I thought. The community gave me plenty of lessons for life. I’m now four years into my recovery journey and grateful. Sober living is a true blessing. ”



COMMUNITY BUILDING ACTIVITIES



Communications



**Collaboration/
Representation**



**Recovery
Support**



**Health
Improvement**

Glenbeigh serves a diverse audience through various means. Communications include Glenbeigh's website and social media platforms as well as published items including the *Glimmer* newsletter and electronic newsletter. Glenbeigh is a community partner, collaborating with other organizations and agencies that serve people with addiction. Employees give back to the communities where they live and work, building relationships with others dedicated to improving health in the community. As a supporter of the recovery community, Glenbeigh hosts events and programs that enhance recovery and build fellowship. Ultimately, Glenbeigh's community building roots are in community service and reducing health disparities for an underserved population.

COMMUNITY BUILDING ACTIVITIES



Communication and collaboration are important components of community building. Communications are enhanced by reaching out using multiple platforms. This allows Glenbeigh to connect with people in the recovery community and those still in the throes of addiction. Social media allows Glenbeigh to reach far beyond the immediate service community by using posts, texts, tweets and YouTube.

Glenbeigh's website provides a wealth of information to visitors researching addiction, treatment and recovery. It is a great resource for anyone searching for help or looking to connect with a recovery support network. It is a platform where updates and news is published electronically.

Collaboration is more than providing financial assistance to other organizations. For example, while Glenbeigh continues to sponsor Rock & Recovery Radio programming, our staff contributes content for the broadcast. Glenbeigh has a presence at educational institutions and at other entities, such as drug courts, to increase access to, and awareness of, available services.

COMMUNITY BUILDING ACTIVITIES

Niles Recovery Housing Meet & Greet **Rock & Resilience Day at Cleveland Rock Hall**
Rocky River 12 Step YOGA **Akron Area 12 Step YOGA**
ASAP Recovery Events **Canton Ladies Recovery Brunch** **Recovery Celebration at Safe Harbor**
Music and Message Erie **Canton Gratitude Breakfast** **Niles Memorial Day Picnic**
Canton Paint & Sip **Niles Holiday Banquet** **Canton End of Summer Picnic**
Niles Gratitude Breakfast
Lia House Recovery Support Event **Music and Message with Chrissy S.** **Rock & Recovery Radio**
ARCHway Golf Outing **Kitanning Recovery Celebration**
Founders Day at Stan Hywett Hall **Tittusville Recovery Celebration**
Rock Creek Alumni & Recovery Community Picnic

Glenbeigh is committed to a thriving recovery community. Part of that commitment is to host and sponsor events that engage people in recovery, include families or other loved ones in the process and demonstrate that people can have fun and thrive while clean and sober. Glenbeigh's community benefit programs such as the Music and Message series are offered in multiple communities. 12 Step YOGA is a regularly scheduled series of events offered throughout the region.

All of Glenbeigh's community building activities are designed with the intent of improving the health of people with the disease of addiction as well as family and loved ones impacted by alcohol and drug use. Glenbeigh has been hosting recovery support events and participating in health improvement initiatives for many years and will continue to do so well into the future.

“ I've always been a social person. I love being with people and my favorite time was at the bar just chillin after work. When my employer told me I needed to get an assessment or lose my job I was so angry. My drinking wasn't that bad and I never drank on the job. I wasn't out of control. At least that's what I thought.

I did the assessment and reluctantly went for detox and inpatient treatment. I agreed to give my counselor one week to prove to me I was an alcoholic. Turns out no one had to convince me. I soon learned my trigger was 5:37 PM. That's when I typically hit the bar and was enjoying my first beer of the night. The cravings were so intense that I chose to use medication for 12 months to keep me on my recovery path.

I can't thank Glenbeigh enough for working with me. The education provided taught me that I was abusing alcohol more than I realized and gave me options to help me successfully get on the path to recovery. My employer is happy to have me back at work. They worked with Glenbeigh's staff to make sure I was ready to return.

I'm still a very social person but my interactions with people no longer involve alcohol. I still enjoy the people I work with and have found many new friends on my journey. It feels good to live sober in the present and to take one day at a time. ”



EDUCATION AND WORKSHOPS



**RISE AND SHINE
EDUCATION**



INTERNSHIPS



NURSE TRAINING



PUBLIC EDUCATION

As an expert in the field of addiction treatment, Glenbeigh employs a highly educated, licensed staff with years of experience caring for individuals and families touched by addiction. One of the key factors identified in both the 2013 and 2016 Community Health Needs Assessments was the lack of education and information regarding services and programs available in the region. Glenbeigh offers educational workshops; trains future counselors, social workers and nursing students interested in working in the field of chemical dependency; distributes information; and hosts events where the general public can learn about addiction, treatment and recovery. During the opioid crisis, Glenbeigh facilitated public education on identifying an overdose and administering Naloxone, a drug that reverses the effects of opioids, which gives first responders time to administer lifesaving care.

EDUCATION AND WORKSHOPS



Glenbeigh believes educating the next generation of caregivers is vital to the health of the community. Many areas within Glenbeigh's service area are classified by the Health Resources and Services Administration as Health Professionals Shortage Areas. There is great need for programs that educate new healthcare professionals to care for people with substance use disorders. There is also a shortage of professionals to work in other fields that help individuals and families touched by addiction. Glenbeigh offers a series of programs that are designed to train future caregivers, to provide continuing education to current professionals and to educate the public on general topics related to addiction, treatment and recovery. Glenbeigh's Rise and Shine educational series offers free continuing education and is also a component of community health improvement.

COMMUNITY HEALTH IMPROVEMENT



**BRIDGES TO
RECOVERY EVENTS**



**COMMUNITY
PRESENTATIONS**



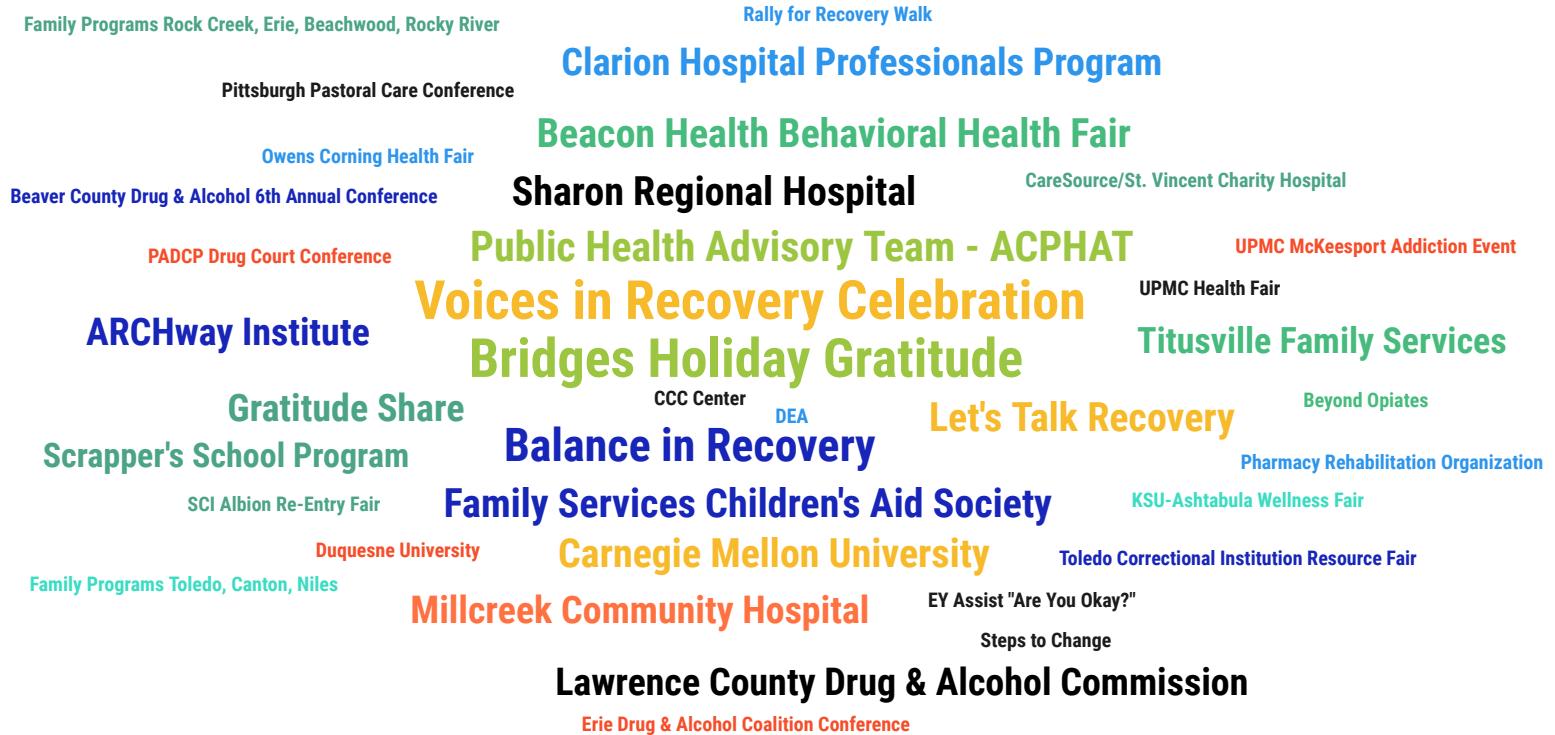
**FAMILY PROGRAMS
AND EDUCATION**



**SPECIALTY SUPPORT
GROUPS**

Community health improvement relies on many factors that influence the health and well-being of people living in the region. Glenbeigh's focus is on the impact of alcohol and drug addiction as well as helping people in recovery learn to thrive while staying clean and sober. By evaluating socioeconomic factors along with health behaviors, a snapshot of what affects health was developed. Community health improvement programming focuses on the greatest needs of those touched by addiction and those living in recovery. Our goal is to collaborate with other health care providers, agencies, businesses, public health entities, non-profits and faith-based organizations to maximize our reach and have the intended impact on health in the community.

COMMUNITY HEALTH IMPROVEMENT



Community health improvement includes Glenbeigh's Bridges to Recovery programs, community alcohol and drug abuse presentations, family education programming, the distribution of information at health fairs and other events, the hosting or sponsorship of symposiums and summits as well as the offering of support groups.

SOCIAL CONNECTIONS



Glenbeigh Website

www.glenbeigh.com



Glenbeigh Facebook

<https://www.facebook.com/GlenbeighHospital>



Glenbeigh Twitter

<https://twitter.com/glenbeighosp>



Glenbeigh LinkedIn

<https://www.linkedin.com/company/glenbeigh>

Glenbeigh's website provides a wealth of information to visitors seeking help for substance use disorders. It offers resources and is a link to myriad recovery support networks. Glenbeigh actively engages the recovery community through the use of social media platforms. Social media and the internet allows Glenbeigh to reach far beyond our service communities and remain in touch with alumni outside the area. Glenbeigh's online community is a gathering of people who are interacting and collaborating toward a common goal.

“Thank you for all you have done for me during my difficult time at Glenbeigh. It really means a lot that people care so much about the patients here. It’s truly inspiring. Don’t stop no matter what!” N.R.

“Glenbeigh’s staff are the nicest, most caring people I’ve ever met. From answering questions about the side effects of medications to giving out candy to brighten our day - everyone is great. I’ve heard that you meet people in life to help you or for you to learn from them and Glenbeigh’s staff does both. They go above and beyond and I’m so grateful.” M.D.

“I felt like I had friends and allies with me during detox which made all the difference in my progress. Glenbeigh’s nurses care about their patients and brighten every day!” C.J.

“Thank you so much for taking the time to explain to me my medications and my treatment plan. You went the extra mile putting my health first. This made a big difference in my recovery.” H.M.D.

“I was a hot mess when I got to Glenbeigh. I’m so grateful for my counselor who helped me calm down and get through my first week. I can’t tell you how many times she told me I was in the right place. Thank you showing me that I was.” S.T.

“I can’t tell you how grateful I am to be able to attend Glenbeigh’s recovery events. I didn’t get clean at Glenbeigh yet I’m welcomed as a member of the recovery community. I especially look forward to Bridges to Recovery, which are different and make recovery fun.” B.P.

“To retain my counseling license I need to stay on top of changes in my field. Thank you Glenbeigh for providing the Rise and Shine series so I can get the education I need on the latest topics related to substance use disorders.” D.R.

GRATITUDE - ANNUAL FUNDRAISING REPORT



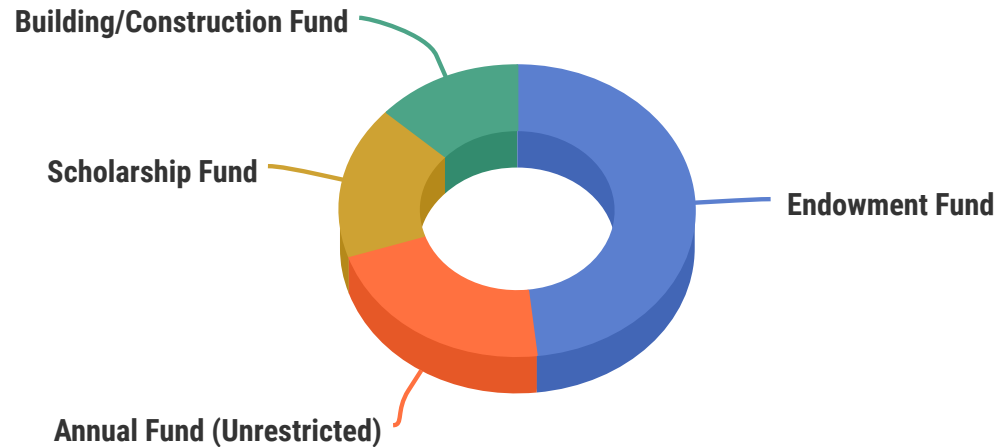
Each year, the generosity of others helps Glenbeigh share hope and healing with people suffering with substance use disorders. Alumni, along with family members and friends, give back as part of the recovery process and the tradition of showing gratitude. Glenbeigh also receives funds from various foundations and businesses that are committed to making the community a better place to live. Many contribute so there are resources for treatment and recovery services, providing more opportunities to people touched by alcohol and drug addiction.

With funding, Glenbeigh provides many resources for patients and family members as part of our efforts to promote a world where recovery is possible and sustainable. Recovery is a gift and we are connected through our caring for each other. While donor names are not published, we are grateful for their kindness and generosity. All donations are used to help others experience a new life free from alcohol and other mood-altering drugs.

ALLOCATIONS OF DONATIONS TO GLENBEIGH FOUNDATION

FUND	% OF DONATIONS
Endowment Fund	48.26%
Annual Fund (Unrestricted)	21.68%
Scholarship Fund	16.90%
Building/Construction	13.16%

2019 Foundation Accounts



GLENBEIGH DEVELOPMENT ADVISORY BOARD



The Development Advisory Board consists of a group of dedicated individuals who advise, offer strategic opinions and share their expertise. They advocate and are liaisons that help build relationships between Glenbeigh and local businesses, government representatives, treatment providers, community partners, volunteers and other recovery support providers. Each advisory board member brings specific skills and connections to help Glenbeigh connect with grant opportunities, enhance community benefit initiatives, coordinate events and promote community outreach. Glenbeigh is grateful to the following development advisory board members who worked with Glenbeigh during the 2019 fiscal year.

Anthony Ciminero
Carrie Artman
Garrett Hart
Gary Seech
Marta Stone
Michael Frasca

Pat Weston-Hall
Pawley Bornstein
Rick Krochka
Sheila Vandergriff
Susan Grimm
William Leimkuehler

BOARD OF DIRECTORS

Nancy Kister, Chairperson

Craig Sernik, Vice-Chairperson

Roger Corlett, Secretary/Treasurer

Michael Habowski, President and Chief Executive Officer/ACMC Healthcare System

Peg Carlo

Joe Giangola

Bill Dingedine

Reverend Vernon Palo

Marlene Sartini

David Pontius

Jim Timonere

Kelly Hancock

Jason Hergenroeder

Richard Parker, DO

Sathish Adigopula, MD

Alexander Taich, MD



ORGANIZATIONAL LEADERSHIP

Pat Weston-Hall Chief Executive Officer/Glenbeigh
 Dr. Christopher Adelman Medical Director
 Dr. Richard Zinni Associate Medical Director

Linda Advey Director, Health Information Systems
 Terri Ball Director of Operations
 Anthony Bouyer, Ph.D. Clinical Supervisor, Toledo
 Jay Burrows Clinical Supervisor, Erie
 Joanna Calabris, RN Nurse Supervisor
 Rebecca Campbell, RN Nurse Supervisor
 Rebecca Cleveland, RN Nurse Supervisor
 Shirley Deary Manager, Human Resources
 Tina Ensman Admission Supervisor
 Karla Galati, Ph.D. Clinical Supervisor, Niles
 William Hale, Ph.D. Director of Outpatient Services
 Kim Hochschild Director, Information Technology
 Mary Hommel, RN Nurse Supervisor
 Tim Hunt Director of Facilities Management
 Deirdre Jones, RN Nurse Supervisor
 Stan Lancey Manager, Safety and Security

Susan McNorton Clinical Supervisor, Rock Creek
 Michael Mickel Manager, Utilization Review
 Helen Park Manager, Business Office
 Tina Phelps, RN Assistant Director of Nursing
 Shannon Pike, RN Director of Nursing
 Angela Rau Manager, Dietary
 Donald Reed Manager, Support Services
 Carolanne Semancik Counseling Supervisor, Rock Creek
 Gary Seech Director of Regional Operations
 Estelle Spear, RN Director, Infection Control/Prevention
 Sheila Vandergriff Director of Development

A photograph of two women from behind, standing on a balcony and looking out at a sunset. Both women have their arms raised high. The woman on the left has her hand open with fingers spread, while the woman on the right is making a peace sign. The sky is a mix of orange, yellow, and blue, with the sun low on the horizon. The balcony railing is visible in the foreground.

3,301

ADULTS ADMITTED FOR
INPATIENT TREATMENT

1,172

ASSESSMENTS COMPLETED AT
ROCK CREEK
BEACHWOOD
CANTON
ERIE
NILES
ROCKY RIVER
TOLEDO

23,225

INTENSIVE OUTPATIENT
SESSIONS COMPLETED



1,324

HEALTH PROFESSIONALS AND
STUDENTS WERE EDUCATED

1,762

PEOPLE ATTENDED EDUCATIONAL
WORKSHOPS, GRIEF SUPPORT,
SYMPOSIUMS/SUMMITS AND
PRESENTATIONS

3,799

INDIVIDUALS PARTICIPATED IN
GLENBEIGH'S FREE FAMILY
PROGRAMS

5,496

PEOPLE BENEFITTED FROM
FINANCIAL AND IN-KIND DONATIONS

83,653

OVERALL TOTAL SERVED THROUGH
GLENBEIGH'S COMMUNITY BENEFIT
PROGRAMS IN 2019



CONTACT US

Postal Address:

P.O. Box 298

Rock Creek, Ohio 44084

Street Address:

2863 State Route 45

Rock Creek, Ohio 44084

Telephone: 1-800-234-1001

Website: www.glenbeigh.com

Email: rockcreek@glenbeigh.com



Glenbeigh

ACMC Healthcare System

An affiliate of

